

Kit 272 Series Installation Instructions for Wood or Metal Posts

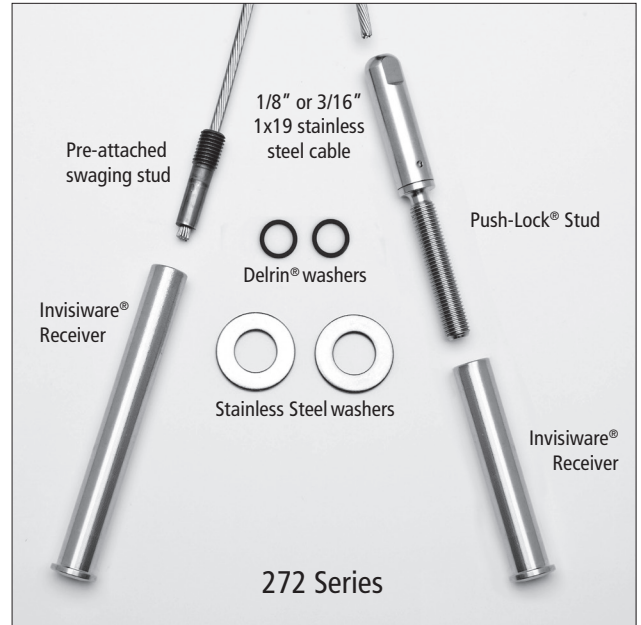
Tools Required for Installation

- 5/32" Drill Bit
- 1/4" Drill Bit
- 29/64" Drill Bit
- 1/8" Hex Wrench
- 3/16" Hex Wrench
- 3" Combo Wrench
- Cable Cutter
- Cable Gripper
- RFXPL-KEY

RailFX Small Cable Gripper

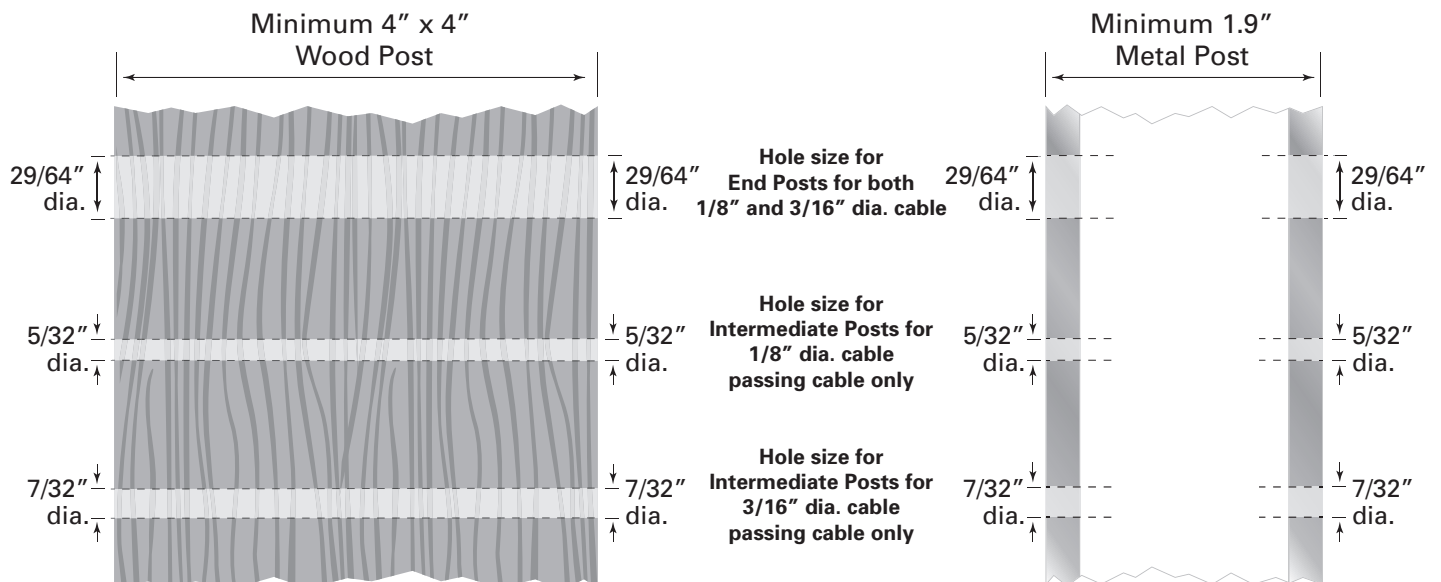
As an alternative to a large cable gripper, this small gripper will clamp on the cable while tensioning to keep the cable from unraveling.

Order **CG-4-6-RFX**



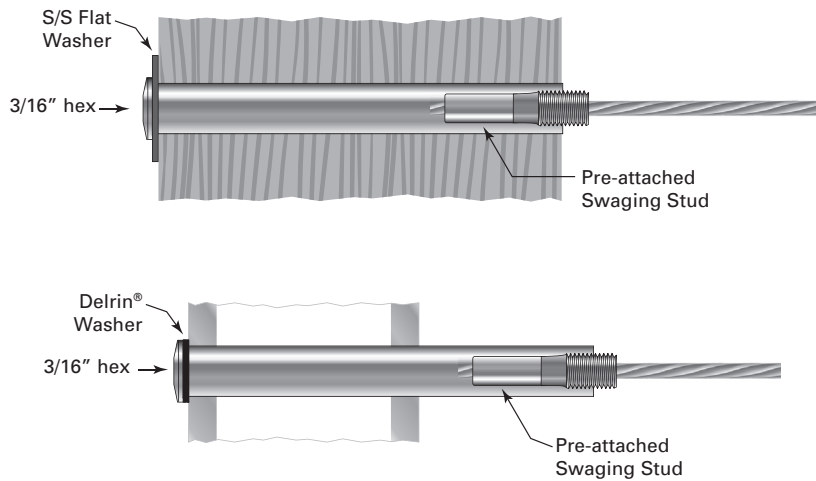
NOTE: Parts must be kept clean and free of debris before installation for best results.

A. Drill Posts



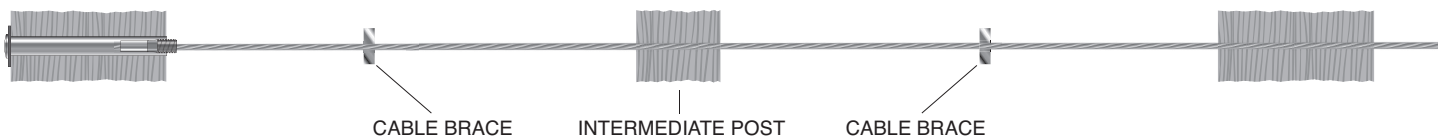
B. Install Tensioning Terminal

1. Install the 3½" long Receiver tensioning end first. Slide the washer (stainless steel for wood post, Delrin® for metal post) over the body of the Receiver and insert the Receiver into the post.
2. Start the threaded stud attached to the cable into the Receiver and turn 3 complete turns. This will thread about 1/2 of the stud into the Receiver.



C. Feed Cable through Intermediate Posts

1. Feed the bare end of the cable through all intermediate posts and through the end post where you will be installing the Push-Lock® fitting.



Feed bare end of cable through all other posts.



Feed bare end of cable through all other posts.

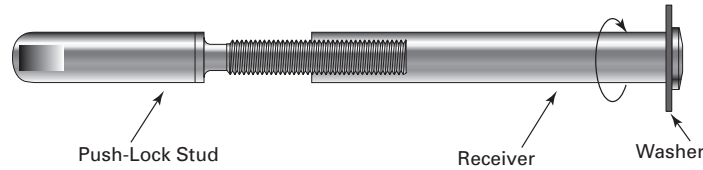
D. Feed/Crimp Cable through Corner Posts

Instructions for going through corners for both wood and metal posts are available at our website. Scan the QR Code at right with your smart phone or call us at 800-851-2961 and ask for Cable Railing Technical Support and we'll email it to you.

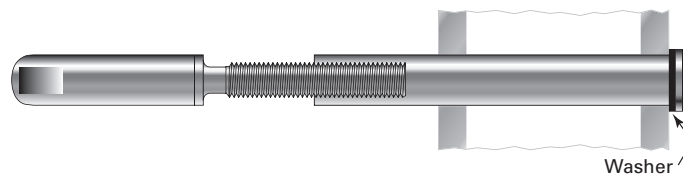


E. Install Swageless Terminal

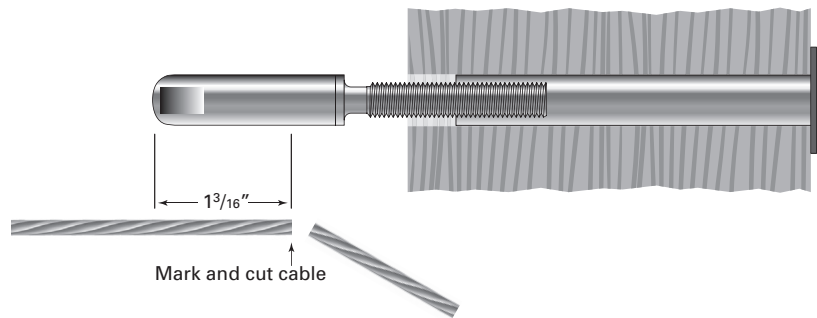
1. Slip the appropriate washer over the body of the Receiver (stainless steel for wood post, Delrin® for metal post), then turn the Receiver half way onto the threads of the Push-Lock® Stud.



2. Slide the connected Receiver with Push-Lock® Stud into the hole in the end post with the Receiver cap and washer resting against the back side of the post.

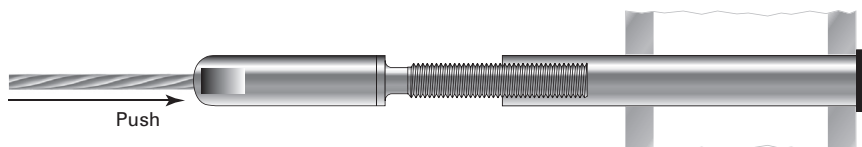


3. Pull the cable tightly along the side of the fitting and mark the cable 1-3/16" from the leading edge of the Push-Lock® Stud. Cut the cable at the mark, using a cable cutter.



4. At opposite end post with tensioning terminal, detach the stud from the Receiver to allow cable slack so you can perform the next step.

5. Back at post with the swageless terminal, push the cable into the hole in the fitting as far as it will go (approximately 1-1/16"). Twist the cable in the right-hand direction as you push it into the fitting. You will feel it slide through the wedges inside the stud.

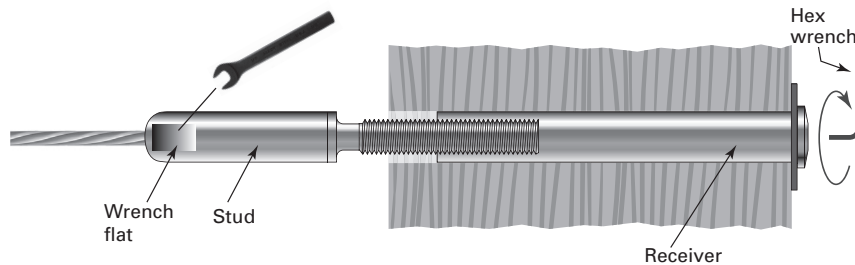


Note: If you have trouble inserting the cable into the fitting, it may be because the locking wedges have become stuck. This is not a defect! Here's what you can do to "free the wedges" — For Pull-Lock® or Push-Lock® fittings for 1/8" cable, using either a RFXPL-KEY or 1/4" diameter bolt, insert the RFXPL-KEY or bolt into the hole and press until the wedges move freely. Perform the same operation for a 3/16" Pull-Lock® or Push-Lock®, except use a 16d nail or another tool with 1/8" or smaller diameter. Anything larger than what is recommended can actually get stuck inside the fitting – NOT what you want!

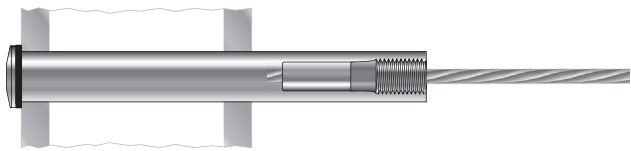
6. Return to the post with tensioning terminal and rethread the stud back into the Receiver.

F. Tension Cables

1. Go to the post with swageless terminal. Grip the wrench flat on the end of the Push-Lock® Stud with a 3/8" open-end wrench (to keep the cable from turning), then turn the Receiver with a 3/16" hex wrench until you can't turn it anymore, exhausting all adjustment.



2. Finish tensioning the cable at the post with tensioning terminal by holding the cable securely to prevent it from turning while you turn the Receiver with a hex wrench. Be careful to protect the cable from damage while tensioning.



The swaging stud will be pulled into the Receiver by rotating the Receiver clockwise.



3. Tension all cables to desired amount in sequence, beginning with the center cables, moving up and down toward the top and bottom. As you tension each cable, give it a sharp pull downward mid-span to help set the wedges, then re-tension as necessary in the same sequence. Be aware that the cable may move as much as 3/16" toward the tensioning terminal as the wedges seat.

