

RFX200 / RFX300 / RFX400 ALUMINUM RAIL WITH GLASS INFILL SYSTEM

		REVISIONS		
ECR/DCR	REV.	DESCRIPTION	DATE	APPD
-	1	UPDATED HARDWARE AND VIEWS	2-19-20	DHL

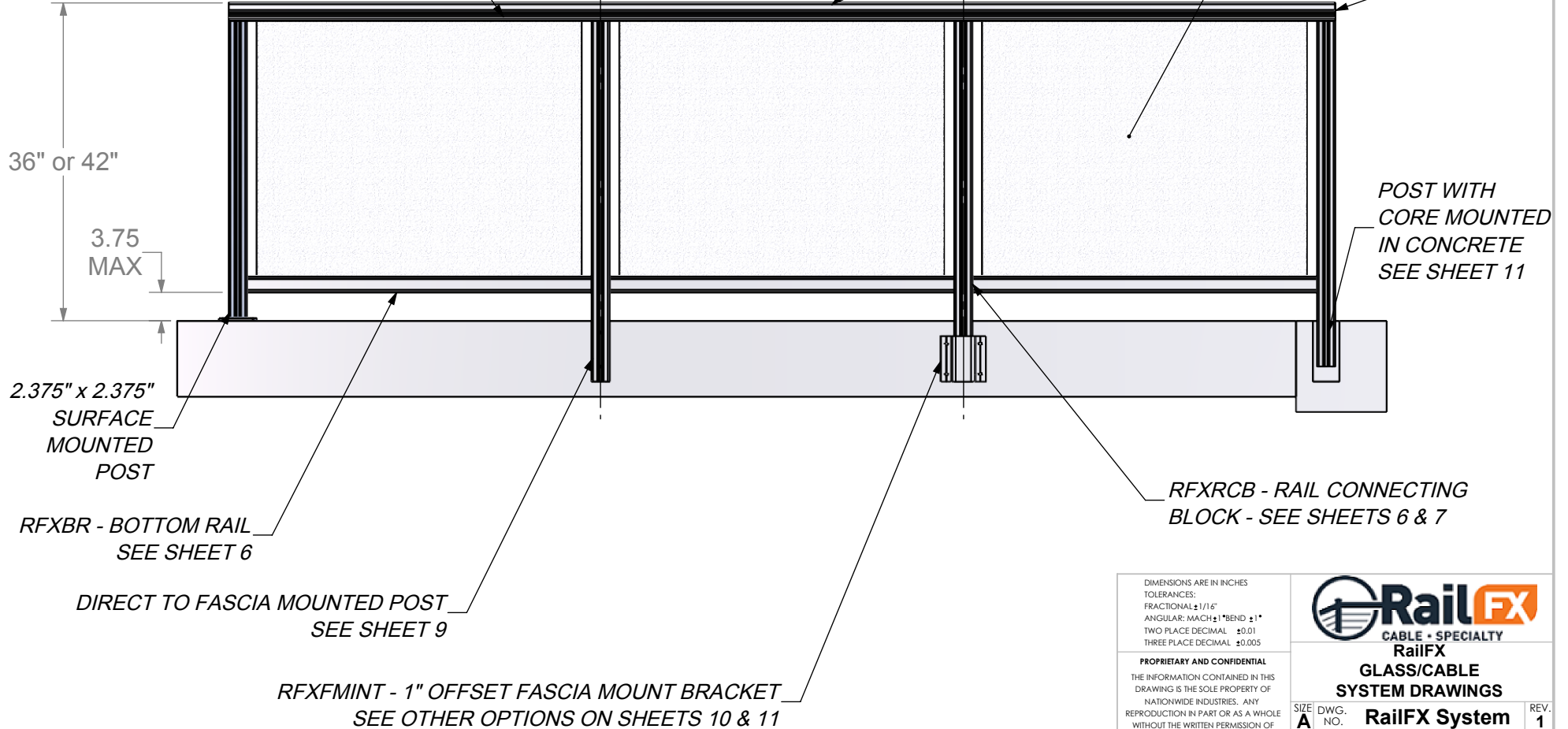
ϕ 0.375" x 6.5" SS LAG BOLTS, POSTS 5' O.C. MAX
 ϕ 0.375" THRU BOLTS, POSTS 5' O.C. MAX
 ϕ 0.375" EXPANSION ANCHORS, 2-7/8" EMBED MIN, POSTS 5' O.C. MAX

RFXEC200/RFXEC300
 OR RFXEC200EXP/
 RFXEC300EXP
 END CAP USED WITH
 SCREWS

INFILL FOR RFX200/RFX300
 FOR GLASS AND PICKETS
 USES RFXUGSK AND RFXLGSK
 (UPPER AND LOWER GASKETS)

RFX200 / RFX300 / RFX 400
 TOP RAIL

TEMPERED GLASS INFILL
 0.25" MIN THICKNESS



36" or 42"

3.75
MAX

2.375" x 2.375"
 SURFACE
 MOUNTED
 POST


RFXBR - BOTTOM RAIL
 SEE SHEET 6

DIRECT TO FASCIA MOUNTED POST
 SEE SHEET 9

RFXFMINT - 1" OFFSET FASCIA MOUNT BRACKET
 SEE OTHER OPTIONS ON SHEETS 10 & 11

RFXRCB - RAIL CONNECTING
 BLOCK - SEE SHEETS 6 & 7

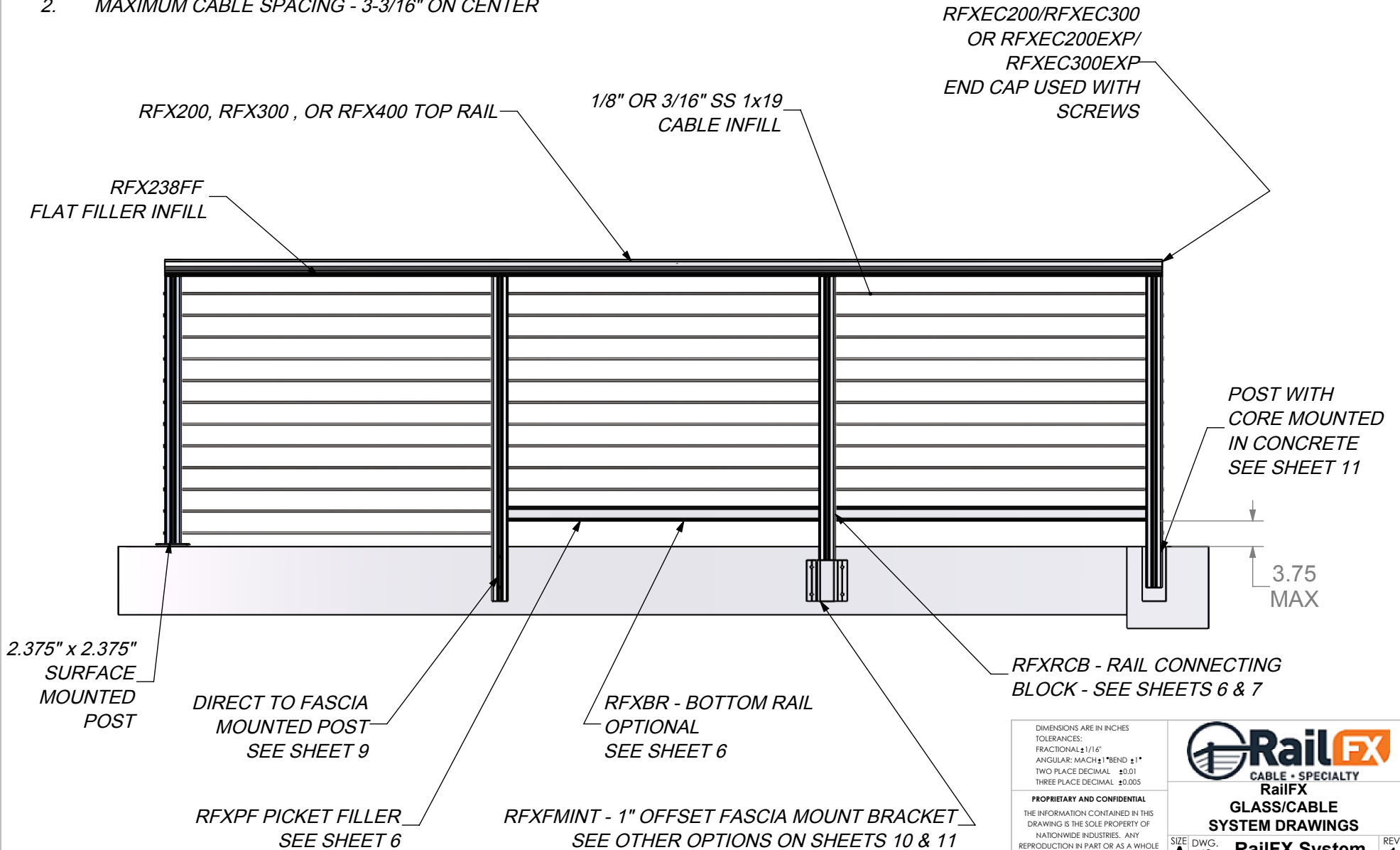
POST WITH
 CORE MOUNTED
 IN CONCRETE
 SEE SHEET 11

DIMENSIONS ARE IN INCHES TOLERANCES: FRACTIONAL $\pm 1/16"$ ANGULAR: MACH $\pm 1^\circ$ BEND $\pm 1^\circ$ TWO PLACE DECIMAL ± 0.01 THREE PLACE DECIMAL ± 0.005		 <p> RailFX CABLE • SPECIALTY RailFX GLASS/CABLE SYSTEM DRAWINGS </p>
PROPRIETARY AND CONFIDENTIAL THE INFORMATION CONTAINED IN THIS DRAWING IS THE SOLE PROPERTY OF NATIONWIDE INDUSTRIES. ANY REPRODUCTION IN PART OR AS A WHOLE WITHOUT THE WRITTEN PERMISSION OF NATIONWIDE INDUSTRIES IS PROHIBITED.		
SIZE A	DWG. NO. RailFX System	REV. 1 SCALE: 1:32 WEIGHT: SHEET 1 OF 11

RFX200 / RFX300 / RFX400 ALUMINUM RAIL WITH STAINLESS STEEL CABLE INFILL SYSTEM

SHEET NOTES:

1. 1/8" OR 3/16" - 316 STAINLESS STEEL CABLE
2. MAXIMUM CABLE SPACING - 3-3/16" ON CENTER



DIMENSIONS ARE IN INCHES
 TOLERANCES:
 FRACTIONAL ±1/16"
 ANGULAR: MACH ±1° BEND ±1°
 TWO PLACE DECIMAL ±0.01
 THREE PLACE DECIMAL ±0.005

PROPRIETARY AND CONFIDENTIAL
 THE INFORMATION CONTAINED IN THIS DRAWING IS THE SOLE PROPERTY OF NATIONWIDE INDUSTRIES. ANY REPRODUCTION IN PART OR AS A WHOLE WITHOUT THE WRITTEN PERMISSION OF NATIONWIDE INDUSTRIES IS PROHIBITED.



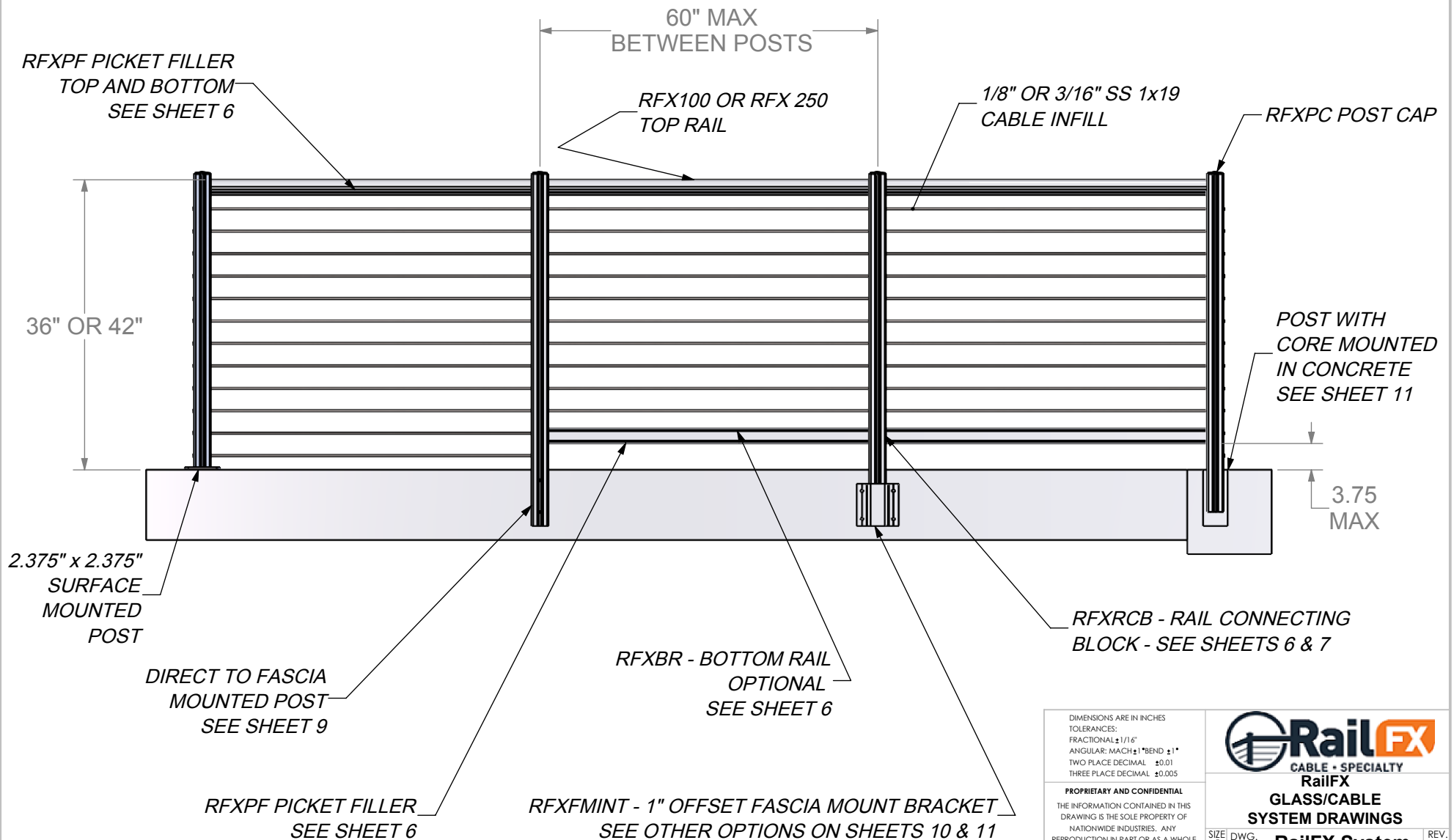
RailFX
 CABLE • SPECIALTY
RailFX
 GLASS/CABLE
 SYSTEM DRAWINGS


SIZE DWG. NO. **RailFX System** REV. **1**
 SCALE: 1:32 | WEIGHT: SHEET 2 OF 11

RFX100 / RFX250 ALUMINUM RAIL WITH STAINLESS STEEL CABLE INFILL SYSTEM

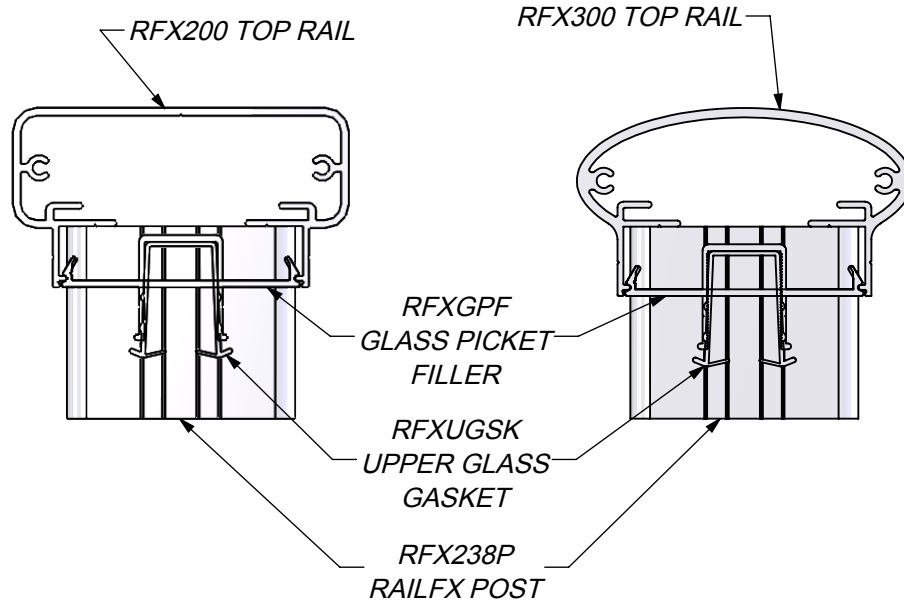
SHEET NOTES:

- 1/8" OR 3/16" - 316 STAINLESS STEEL CABLE
- MAXIMUM CABLE SPACING - 3-3/16" ON CENTER

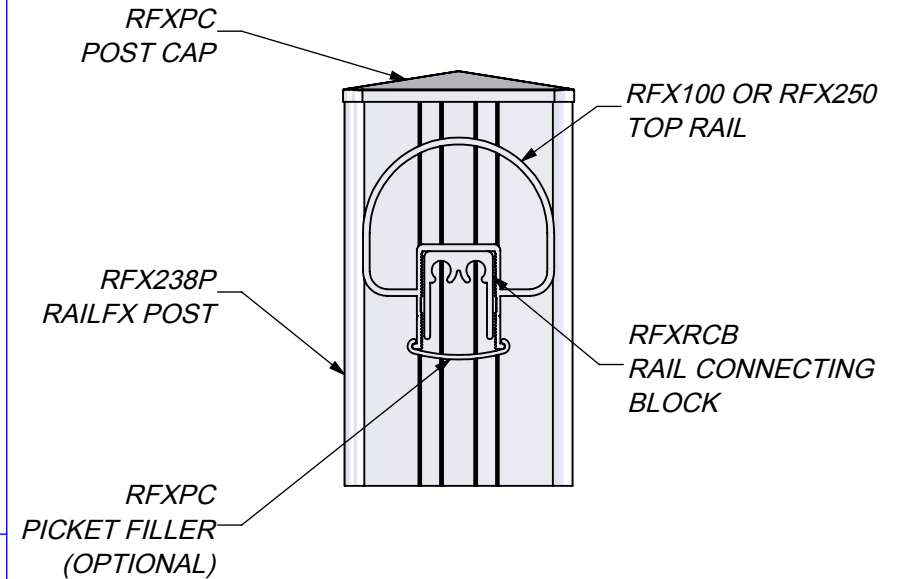


DIMENSIONS ARE IN INCHES TOLERANCES: FRACTIONAL $\pm 1/16"$ ANGULAR: MACH $\pm 1^\circ$ BEND $\pm 1^\circ$ TWO PLACE DECIMAL ± 0.01 THREE PLACE DECIMAL ± 0.005		 <p>RailFX CABLE • SPECIALTY</p> <p>RailFX GLASS/CABLE SYSTEM DRAWINGS</p>
PROPRIETARY AND CONFIDENTIAL THE INFORMATION CONTAINED IN THIS DRAWING IS THE SOLE PROPERTY OF NATIONWIDE INDUSTRIES. ANY REPRODUCTION IN PART OR AS A WHOLE WITHOUT THE WRITTEN PERMISSION OF NATIONWIDE INDUSTRIES IS PROHIBITED.		
SIZE: A	DWG. NO.: RailFX System	REV. 1
SCALE: 1:32 WEIGHT:		SHEET 3 OF 11

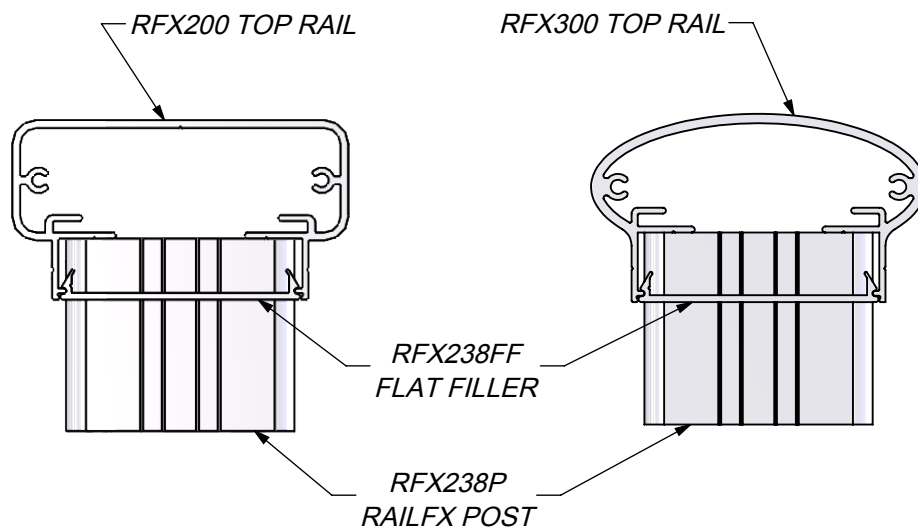
TOP RAIL PROFILES GLASS INFILL



TOP RAIL PROFILE SS CABLE INFILL - RFX100 AND RFX 250



TOP RAIL PROFILES SS CABLE INFILL



SHEET NOTES:

1. RFX250 TOP RAIL MOUNTED WITH RFXRCB AS SHOWN ABOVE IN THE SIMILAR FASHION AS RFX100
2. USAGE OF RFXPC IS OPTIONAL
3. RFX250 CAN BE USED WITH GLASS INFILL BY USING RFXUGSK

DIMENSIONS ARE IN INCHES
TOLERANCES:
FRACTIONAL $\pm 1/16"$
ANGULAR: MACH $\pm 1^\circ$ BEND $\pm 1^\circ$
TWO PLACE DECIMAL ± 0.01
THREE PLACE DECIMAL ± 0.005

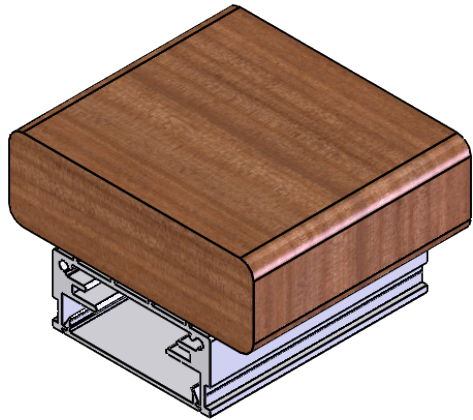
PROPRIETARY AND CONFIDENTIAL
THE INFORMATION CONTAINED IN THIS
DRAWING IS THE SOLE PROPERTY OF
NATIONWIDE INDUSTRIES. ANY
REPRODUCTION IN PART OR AS A WHOLE
WITHOUT THE WRITTEN PERMISSION OF
NATIONWIDE INDUSTRIES IS PROHIBITED.



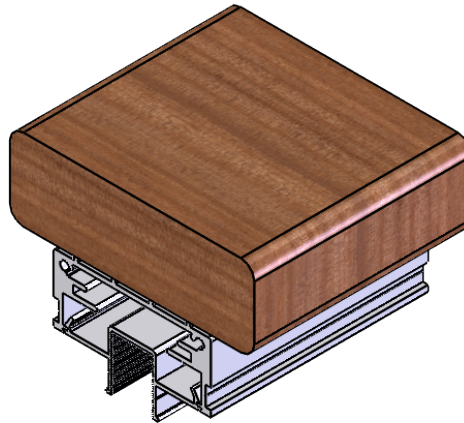
RailFX
CABLE • SPECIALTY
RailFX
GLASS/CABLE
SYSTEM DRAWINGS

SIZE DWG. NO. **RailFX System** REV. 1
SCALE: 1:2 WEIGHT: SHEET 4 OF 11

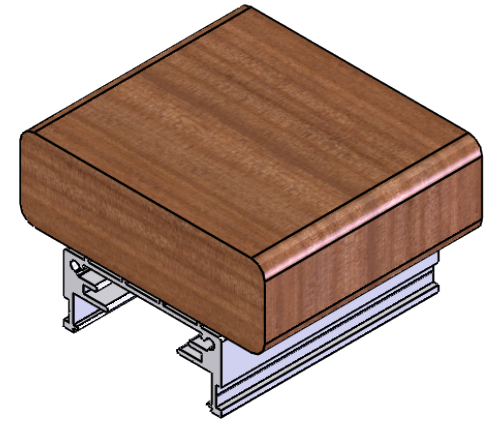
*WOOD RAIL PROFILE OPTIONS
USES RFX400 TOP RAIL WITH WOOD TOP*



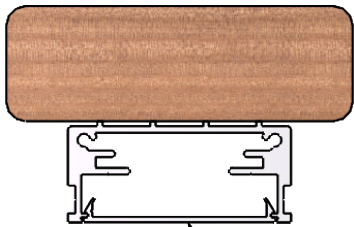
RFX400 WITH FLAT INFILL



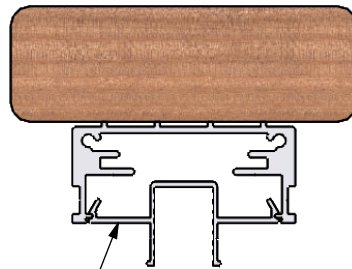
*RFX400 WITH INFILL FOR
GLASS / PICKET*



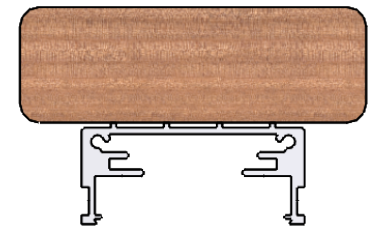
RFX400 WITHOUT INFILL




*RFX238FF
FLAT FILLER INFILL*

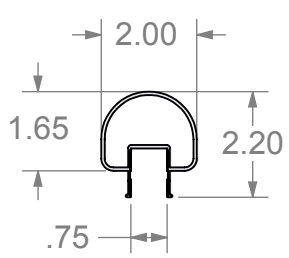


*RFXGPF
GLASS PICKET FILLER*

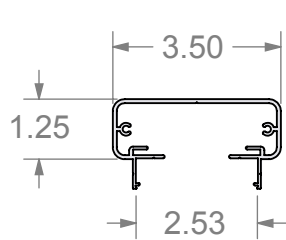


<p>DIMENSIONS ARE IN INCHES TOLERANCES: FRACTIONAL: ±1/16" ANGULAR: MACH ±1° BEND ±1° TWO PLACE DECIMAL: ±0.01 THREE PLACE DECIMAL: ±0.005</p>		 <p>RailFX CABLE • SPECIALTY RailFX GLASS/CABLE SYSTEM DRAWINGS</p>
<p>PROPRIETARY AND CONFIDENTIAL THE INFORMATION CONTAINED IN THIS DRAWING IS THE SOLE PROPERTY OF NATIONWIDE INDUSTRIES. ANY REPRODUCTION IN PART OR AS A WHOLE WITHOUT THE WRITTEN PERMISSION OF NATIONWIDE INDUSTRIES IS PROHIBITED.</p>		
<p>SIZE: A</p>	<p>DWG. NO. RailFX System</p>	<p>REV. 1</p>
<p>SCALE: 1:2</p>	<p>WEIGHT:</p>	<p>SHEET 5 OF 11</p>

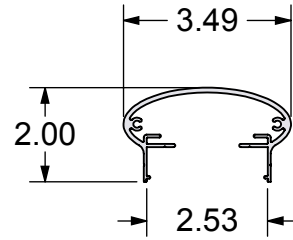
TOP RAIL OPTIONS AND DETAILS



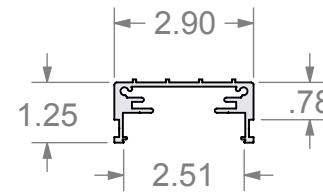
RFX100



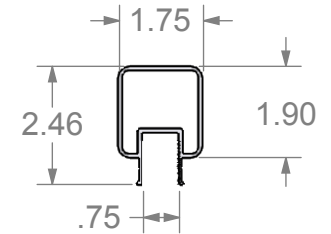
RFX200



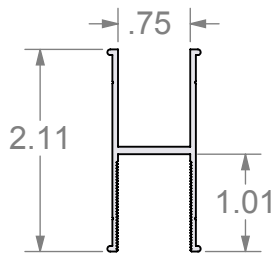
RFX300



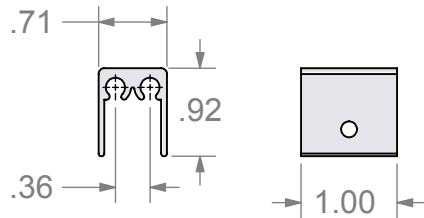
RFX400



RFX250

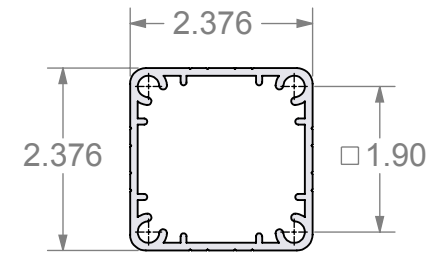


RFXBR
BOTTOM RAIL



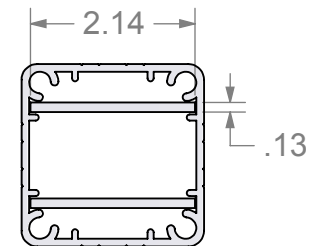
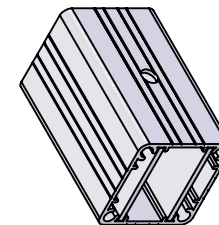
RFXRCB
RAIL CONNECTING BLOCK

**BOTTOM RAIL AND
RAIL CONNECTING
BLOCK
DETAILS**



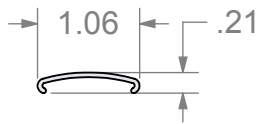
RFX238P
RFX STANDARD POST X-SEC

**POST
DETAILS**

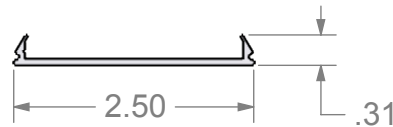


RFX238P WITH RFXPS (POST STIFFENER)
HOLES MUST BE IN LINE WITH STIFFENER

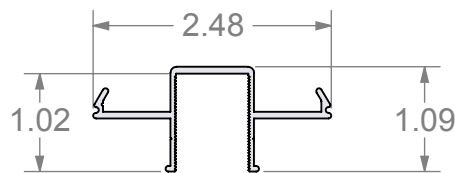
FILLER OPTIONS AND DETAILS



RFXPF
PICKET FILLER
USED WITH RFX100 /
RFX250 / RFXBR



RFX238FF
FLAT FILLER
USED WITH RFX200/RFX300/RFX400
FOR CABLE INFILL



RFXGPF
GLASS PICKET FILLER
USED WITH RFX200/RFX300/RFX400
FOR GLASS OR PICKET INFILL

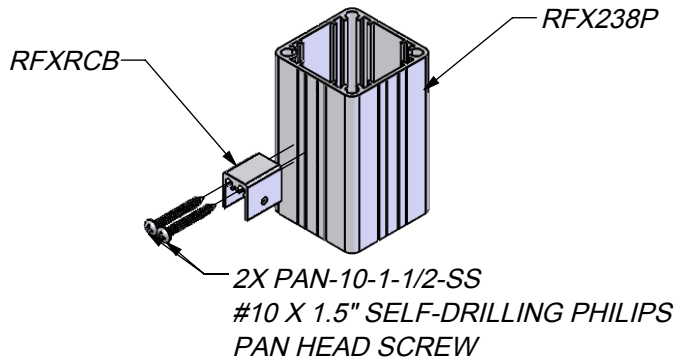
DIMENSIONS ARE IN INCHES
TOLERANCES:
FRACTIONAL: ±1/16"
ANGULAR: MACH ±1° BEND ±1°
TWO PLACE DECIMAL: ±0.01
THREE PLACE DECIMAL: ±0.005

PROPRIETARY AND CONFIDENTIAL
THE INFORMATION CONTAINED IN THIS
DRAWING IS THE SOLE PROPERTY OF
NATIONWIDE INDUSTRIES. ANY
REPRODUCTION IN PART OR AS A WHOLE
WITHOUT THE WRITTEN PERMISSION OF
NATIONWIDE INDUSTRIES IS PROHIBITED.

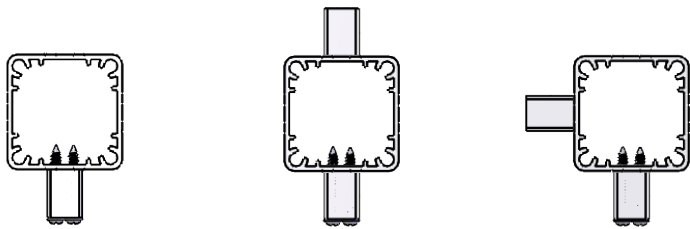


RailFX
RAILFX
GLASS/CABLE
SYSTEM DRAWINGS

<small>SIZE</small> A	<small>DWG. NO.</small> RailFX System	<small>REV.</small> 1	<small>SCALE: 1:32 WEIGHT: SHEET 6 OF 11</small>
---------------------------------	---	---------------------------------	--



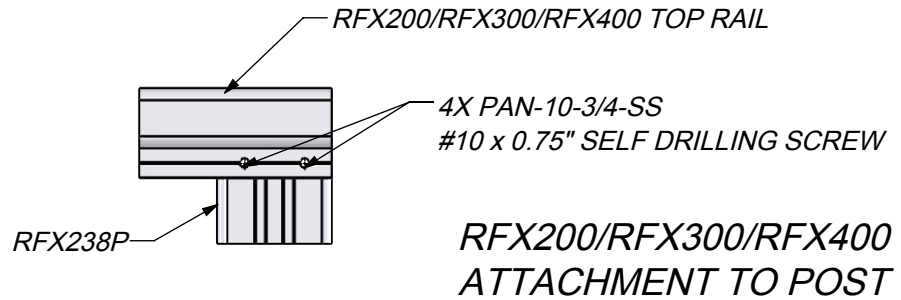
RFXRCB CONNECTION TO RFX238P



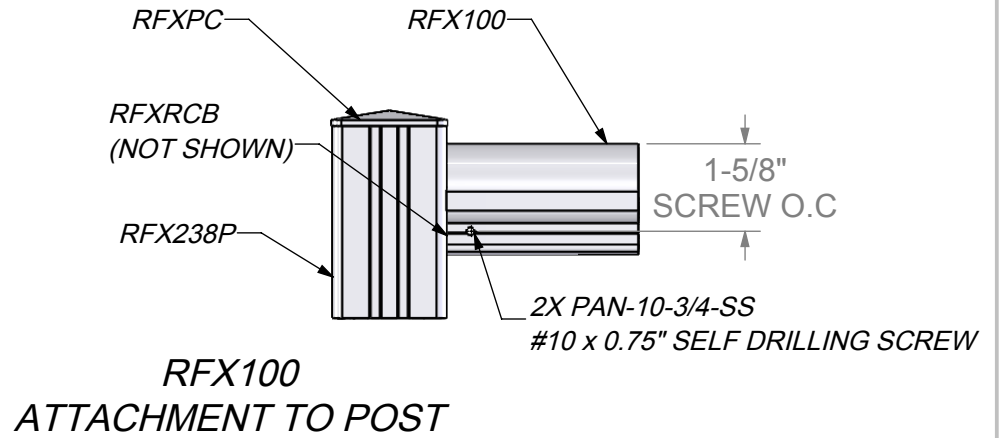
END POST

INTERMEDIATE POST

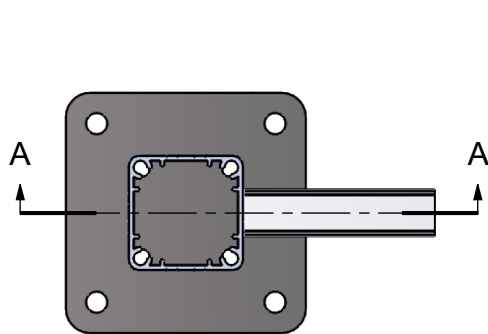
SINGLE CORNER POST



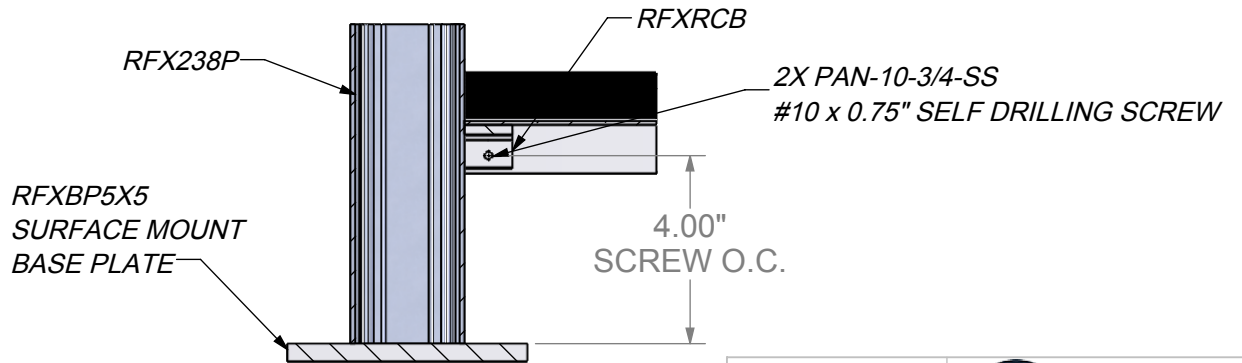
RFX200/RFX300/RFX400 ATTACHMENT TO POST



RFX100 ATTACHMENT TO POST



BR100 ATTACHMENT TO POST



**SECTION A-A
BR100 ATTACHMENT TO POST
SCALE 1 : 4**

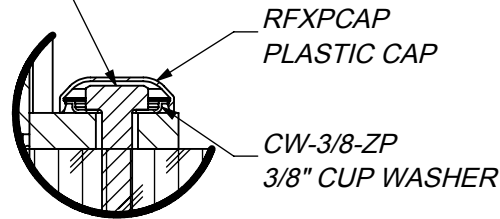
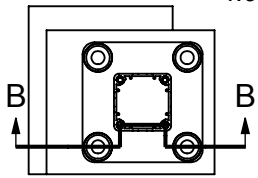
DIMENSIONS ARE IN INCHES
TOLERANCES:
FRACTIONAL $\pm 1/16"$
ANGULAR: MACH $\pm 1"$ BEND $\pm 1"$
TWO PLACE DECIMAL ± 0.01
THREE PLACE DECIMAL ± 0.005

PROPRIETARY AND CONFIDENTIAL
THE INFORMATION CONTAINED IN THIS DRAWING IS THE SOLE PROPERTY OF NATIONWIDE INDUSTRIES. ANY REPRODUCTION IN PART OR AS A WHOLE WITHOUT THE WRITTEN PERMISSION OF NATIONWIDE INDUSTRIES IS PROHIBITED.

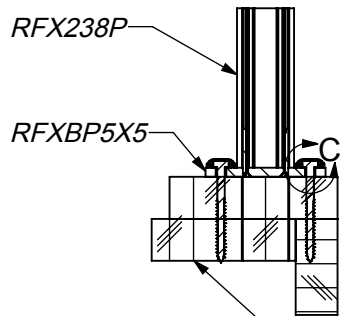
RailFX
CABLE • SPECIALTY
RailFX
GLASS/CABLE
SYSTEM DRAWINGS

SIZE: **A** DWG. NO.: **RailFX System** REV. **1**
SCALE: 1:2 WEIGHT: SHEET 7 OF 11

HEX-3/8-LAG-5.00-SS
 3/8 X 4" HEX HEAD LAG BOLT
 4.0" MINIMUM EMBED



DETAIL C
 SCALE 1 : 2

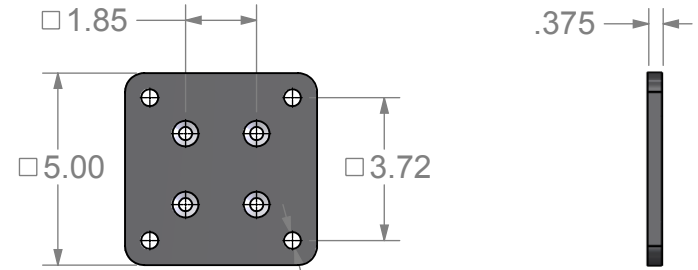


SECTION B-B

ADDITIONAL BLOCKING MAY BE NEEDED
 TO MEET 4" MINIMUM EMBED

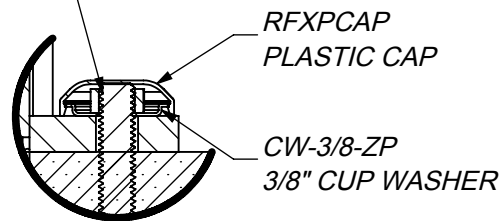
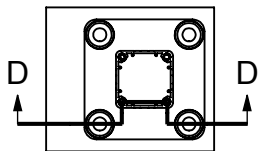
**SURFACE MOUNT POST
 WITH BASE PLATE IN WOOD**

RFXBP5X5 DETAILS

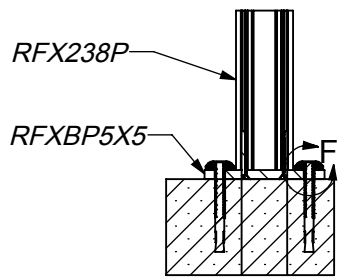


7/16" HOLES FOR 3/8"
 ATTACHEMNTS TYP.

WA-3/8-16-3.75-SS
 3/8 X 3.75" CONCRETE ANCHOR BOLT
 2-7/8" MINIMUM EMBED

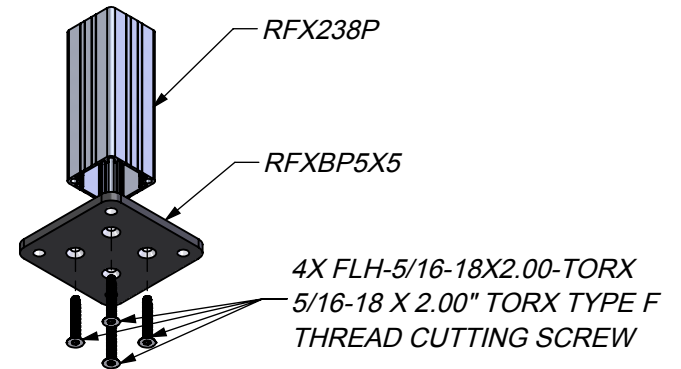


DETAIL F
 SCALE 1 : 2




SECTION D-D

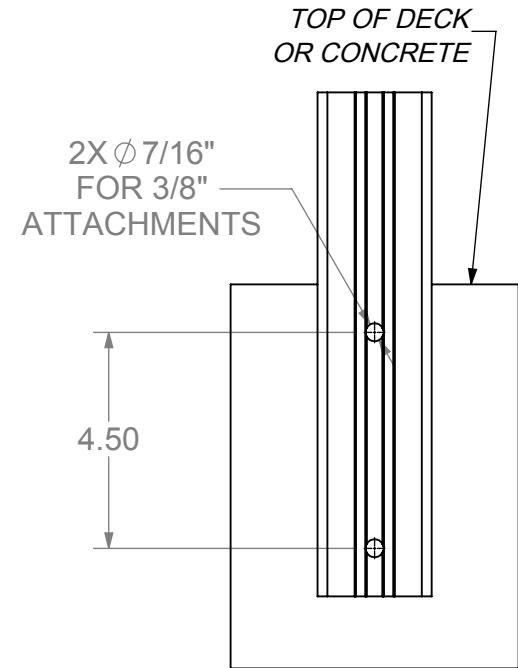
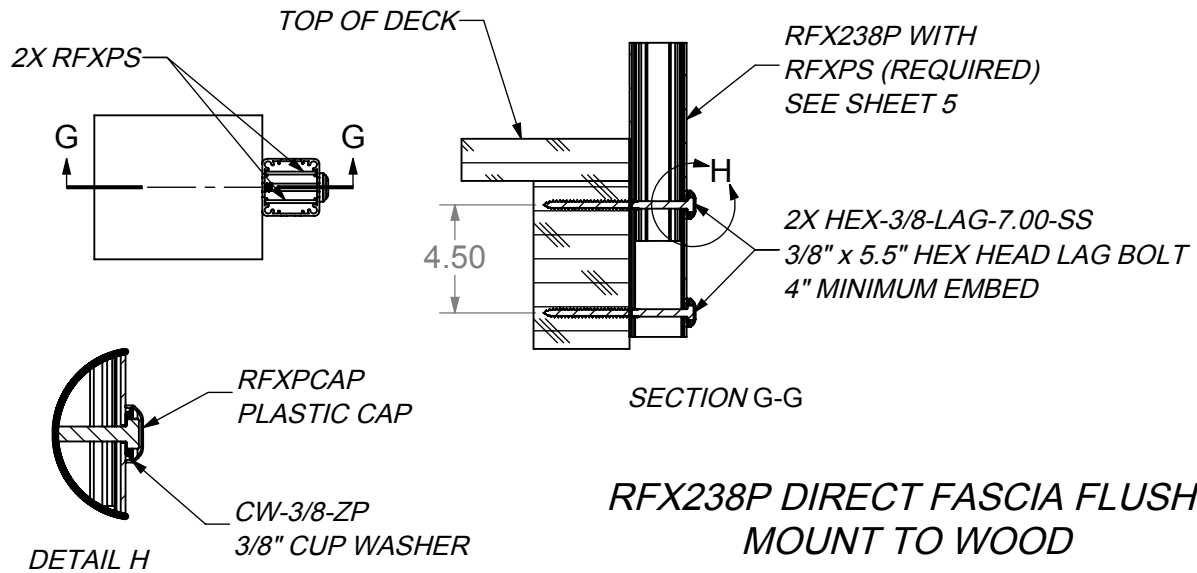
**SURFACE MOUNT POST
 WITH BASE PLATE IN CONCRETE**



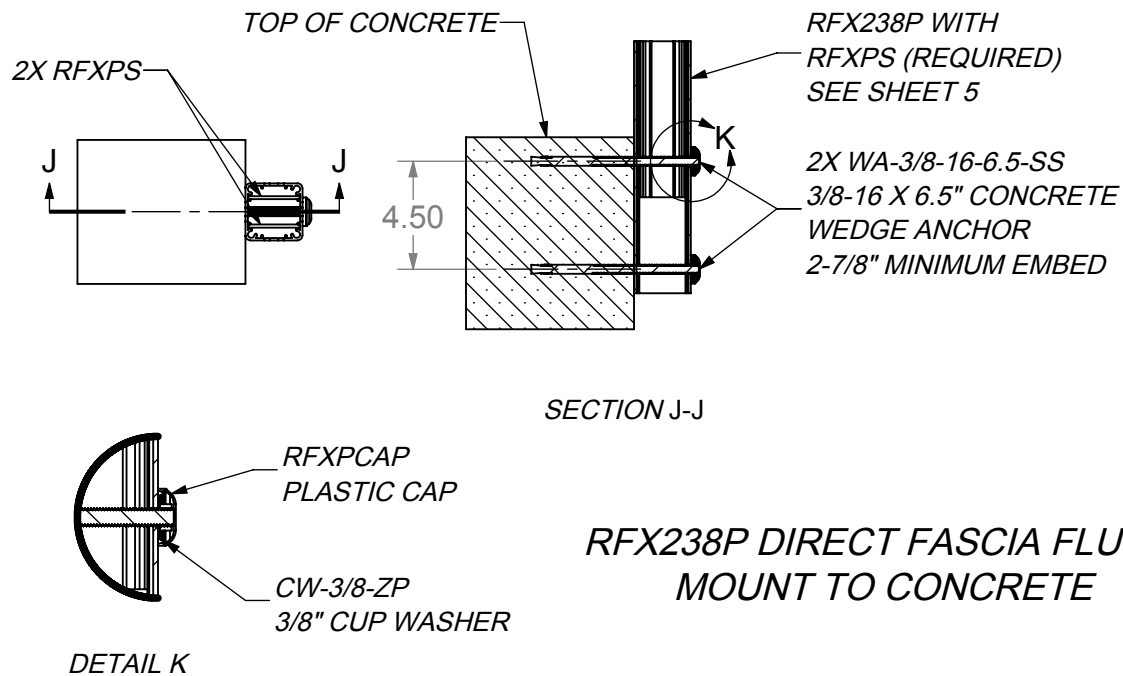
4X FLH-5/16-18X2.00-TORX
 5/16-18 X 2.00" TORX TYPE F
 THREAD CUTTING SCREW

RFXBP5X5 ATTACHMENT


DIMENSIONS ARE IN INCHES TOLERANCES: FRACTIONAL ±1/16" ANGULAR: MACH ±1° BEND ±1° TWO PLACE DECIMAL ±0.01 THREE PLACE DECIMAL ±0.005		 RailFX CABLE • SPECIALTY RailFX GLASS/CABLE SYSTEM DRAWINGS	
PROPRIETARY AND CONFIDENTIAL THE INFORMATION CONTAINED IN THIS DRAWING IS THE SOLE PROPERTY OF NATIONWIDE INDUSTRIES. ANY REPRODUCTION IN PART OR AS A WHOLE WITHOUT THE WRITTEN PERMISSION OF NATIONWIDE INDUSTRIES IS PROHIBITED.			
SIZE A	DWG. NO.	RailFX System	REV. 1
SCALE: 1:8		WEIGHT:	SHEET 8 OF 11

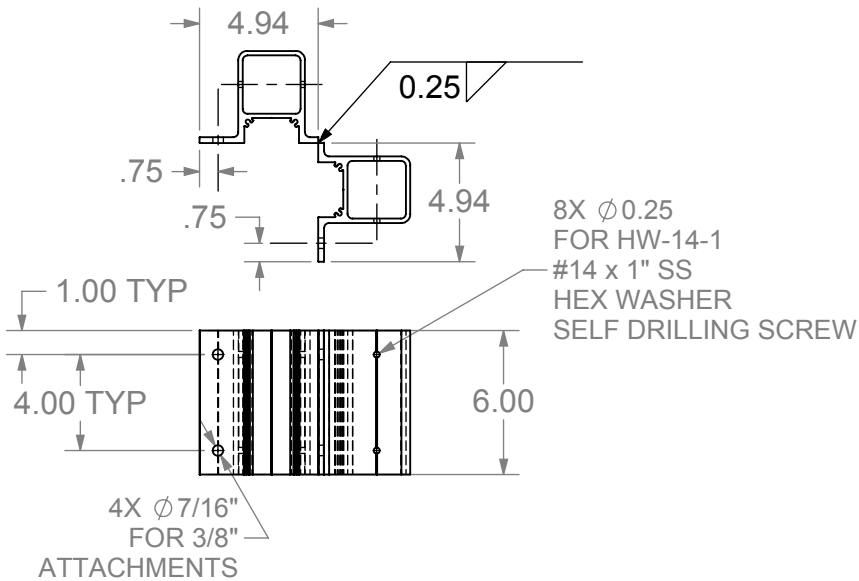


FLUSH MOUNT FASCIA ATTACHMENT (RFXPS REQUIRED FOR ALL DIRECT FASCIA MOUNTS)

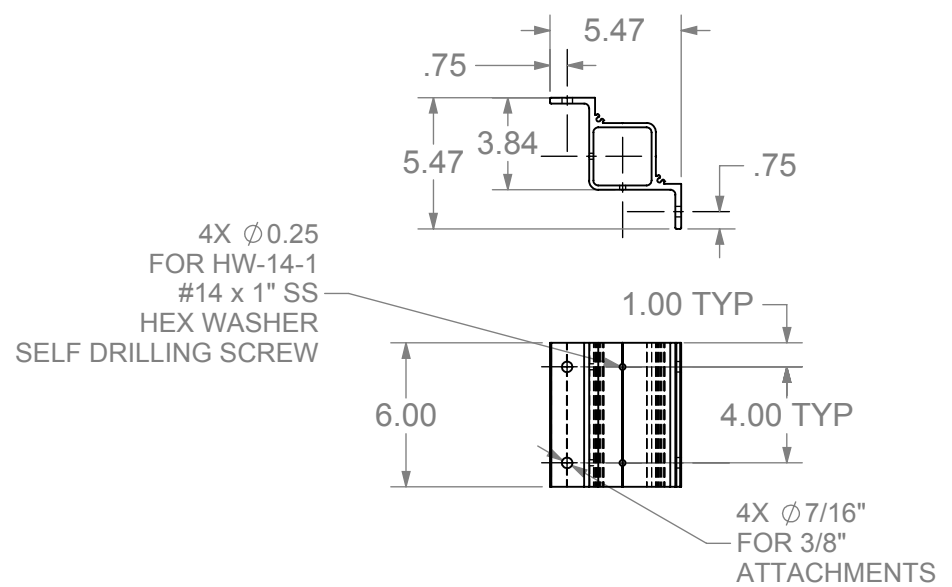


OPTIONAL ATTACHMENT (NOT SHOWN): 3/8" THRU BOLT WITH NUT 3.5" MINIMUM BACKING

DIMENSIONS ARE IN INCHES TOLERANCES: FRACTIONAL $\pm 1/16"$ ANGULAR: MACH $\pm 1^\circ$ BEND $\pm 1^\circ$ TWO PLACE DECIMAL ± 0.01 THREE PLACE DECIMAL ± 0.005		 RailFX CABLE • SPECIALTY RailFX GLASS/CABLE SYSTEM DRAWINGS
PROPRIETARY AND CONFIDENTIAL THE INFORMATION CONTAINED IN THIS DRAWING IS THE SOLE PROPERTY OF NATIONWIDE INDUSTRIES. ANY REPRODUCTION IN PART OR AS A WHOLE WITHOUT THE WRITTEN PERMISSION OF NATIONWIDE INDUSTRIES IS PROHIBITED.		
SIZE A	DWG. NO. RailFX System	REV. 1
SCALE: 1:4	WEIGHT:	SHEET 9 OF 11

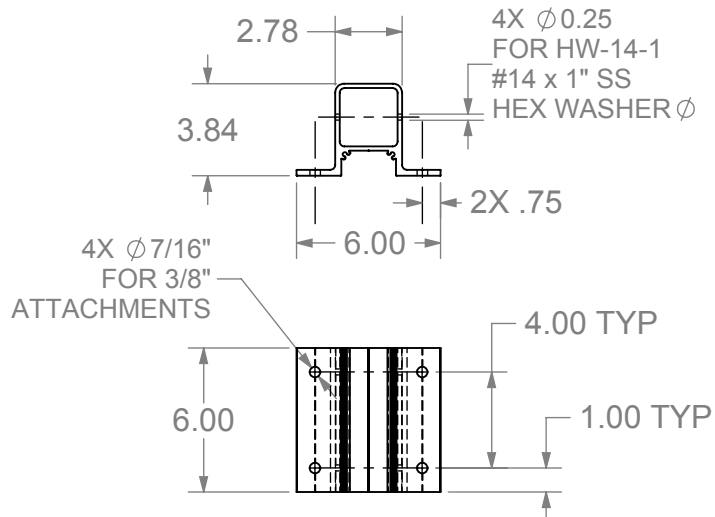


**RFXFMDOUBLE 1" STANDOFF FASCIA MOUNT
OUTSIDE CORNER DOULBE POST BRACKET
(CABLE RAIL ONLY)**

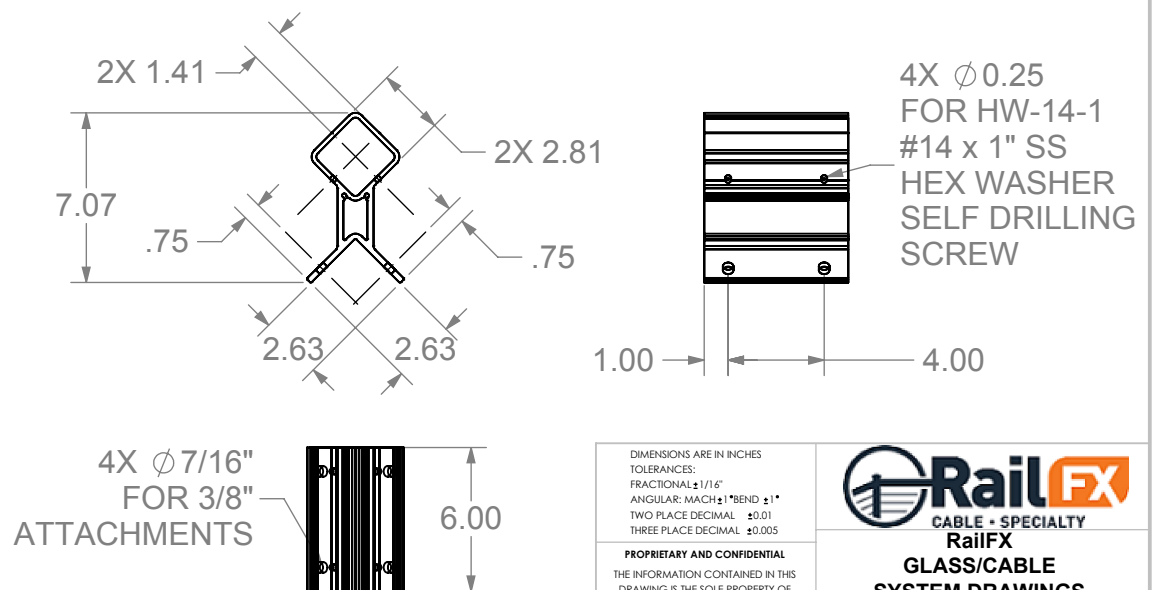



**RFXFMIN 1" STANDOFF FASCIA MOUNT
INSIDE CORNER POST BRACKET**

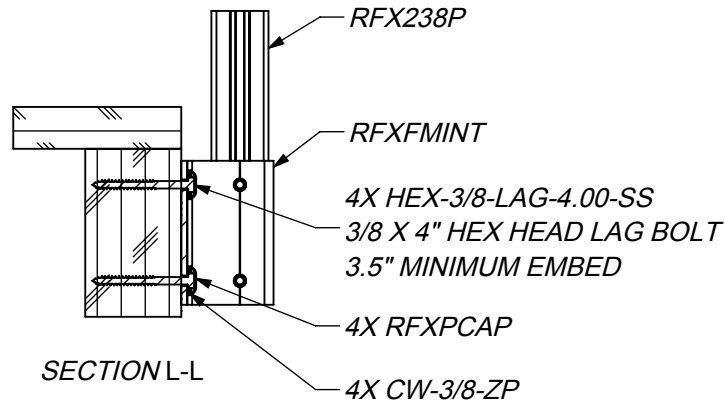
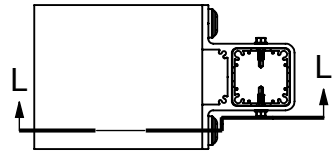
**RFXFMINT 1" STANDOFF FASCIA MOUNT
INTERMEDIATE POST BRACKET**



**RFXFOUT 1" STANDOFF FASCIA MOUNT
OUTSIDE CORNER POST BRACKET**

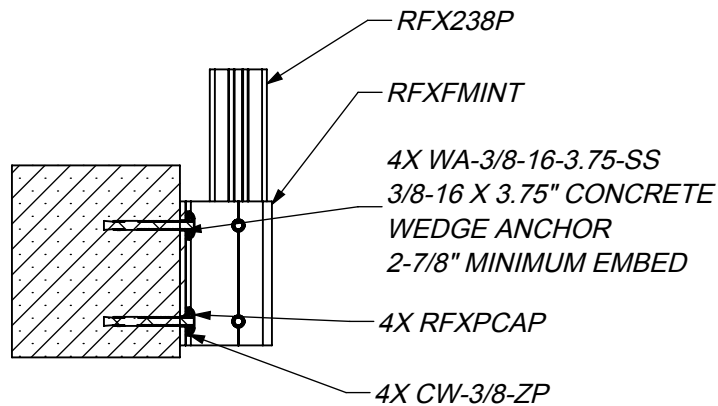
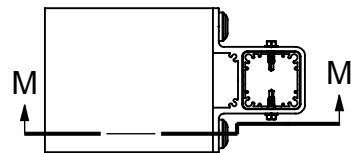


DIMENSIONS ARE IN INCHES TOLERANCES: FRACTIONAL ±1/16" ANGULAR: MACH ±1° BEND ±1° TWO PLACE DECIMAL ±0.01 THREE PLACE DECIMAL ±0.005		 <p>RailFX CABLE • SPECIALTY RailFX GLASS/CABLE SYSTEM DRAWINGS</p>	
PROPRIETARY AND CONFIDENTIAL THE INFORMATION CONTAINED IN THIS DRAWING IS THE SOLE PROPERTY OF NATIONWIDE INDUSTRIES. ANY REPRODUCTION IN PART OR AS A WHOLE WITHOUT THE WRITTEN PERMISSION OF NATIONWIDE INDUSTRIES IS PROHIBITED.			
SIZE: A	DWG. NO.	RailFX System	REV. 1
SCALE: 1:4		WEIGHT:	
SHEET 10 OF 11			



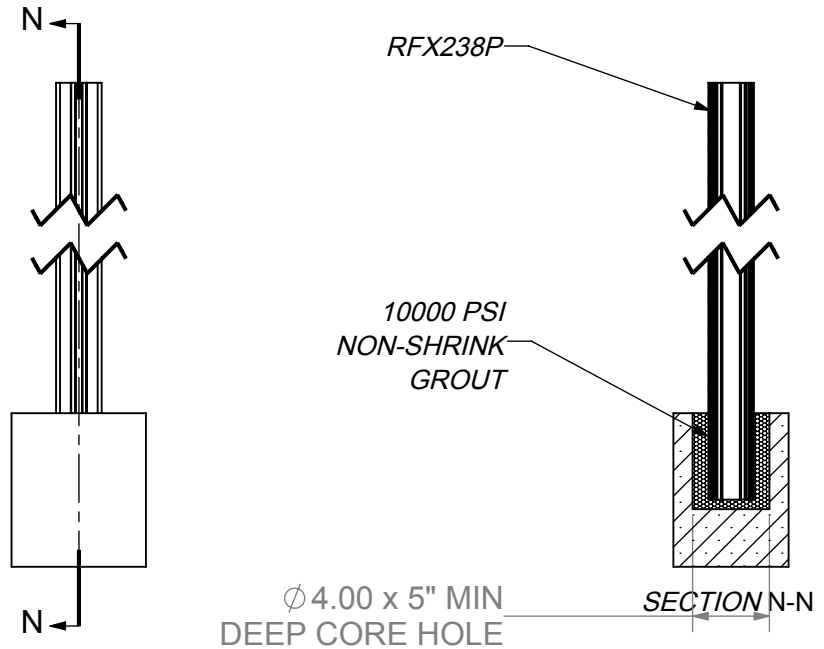
RFXMINT MOUNTING IN WOOD

RFXMINT MOUNTING IN CONCRETE




SECTION M-M

RFX238P POST MOUNT DIRECT IN CONCRETE



SHEET NOTES:

1. RFXFMDOUBLE / RFXFMIN / RFXFMOUTMOUNTED IN SIMILAR FASHION
2. OPTIONAL ATTACHMENT (NOT SHOWN): 3/8" THRU BOLT WITH NUT WITH 3.5" MINIMUM BACKING

DIMENSIONS ARE IN INCHES TOLERANCES: FRACTIONAL ±1/16" ANGULAR: MACH ±1° BEND ±1° TWO PLACE DECIMAL ±0.01 THREE PLACE DECIMAL ±0.005		 RailFX CABLE • SPECIALTY RailFX GLASS/CABLE SYSTEM DRAWINGS	SIZE DWG. NO. REV. A 1 1
PROPRIETARY AND CONFIDENTIAL THE INFORMATION CONTAINED IN THIS DRAWING IS THE SOLE PROPERTY OF NATIONWIDE INDUSTRIES. ANY REPRODUCTION IN PART OR AS A WHOLE WITHOUT THE WRITTEN PERMISSION OF NATIONWIDE INDUSTRIES IS PROHIBITED.			SCALE: 1:8 WEIGHT: SHEET 11 OF 11