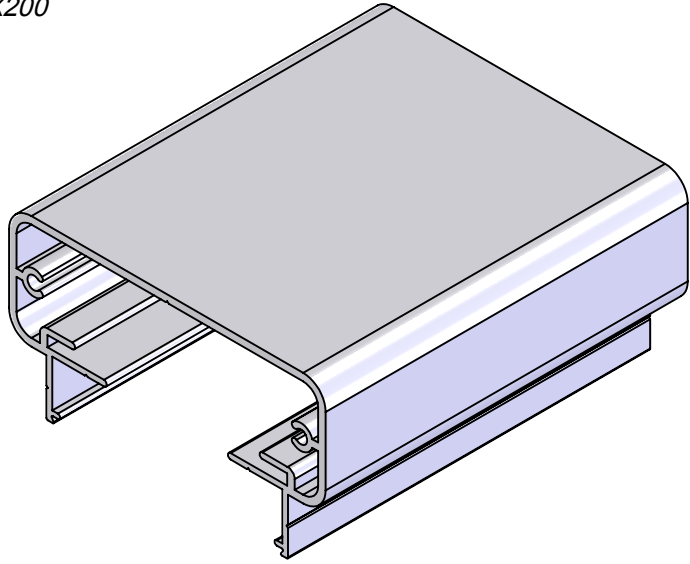
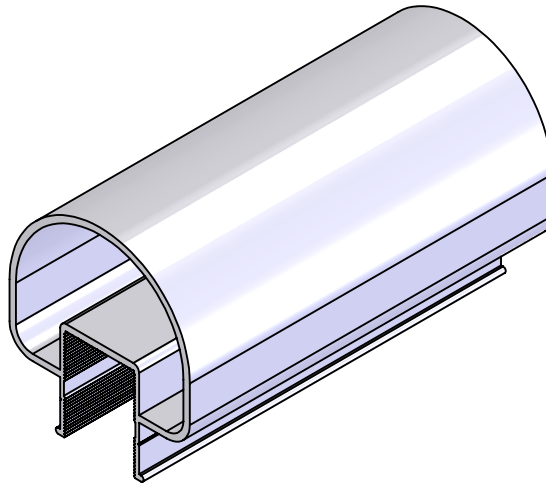
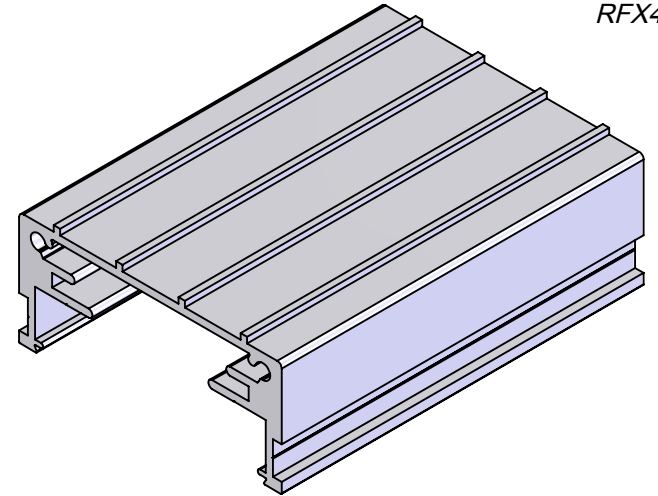


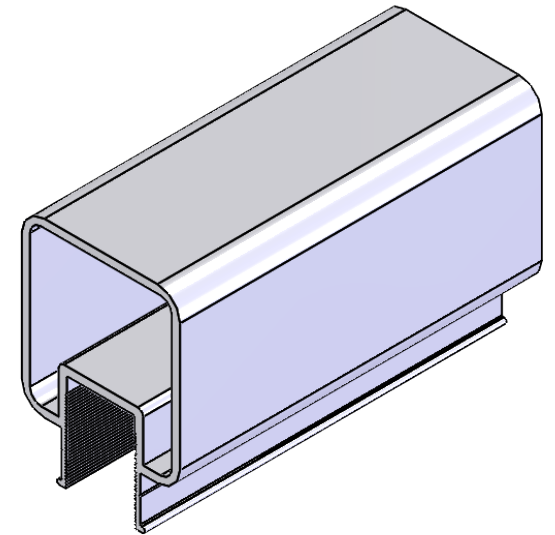
RFX200



RFX400

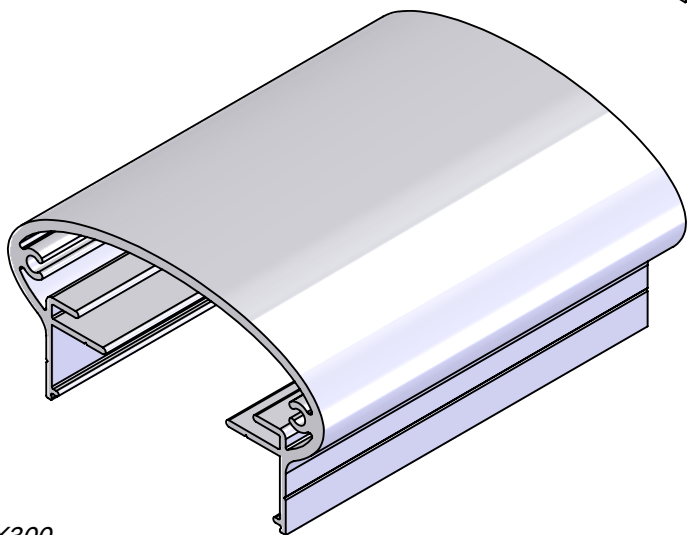



RFX100



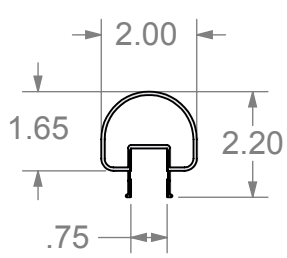
RFX250

RFX300

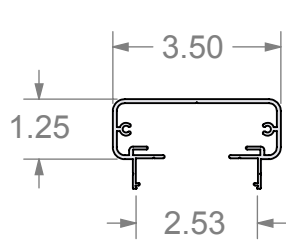


DIMENSIONS ARE IN INCHES TOLERANCES: FRACTIONAL $\pm 1/16"$ ANGULAR: MACH $\pm 1^\circ$ BEND $\pm 1^\circ$ TWO PLACE DECIMAL ± 0.01 THREE PLACE DECIMAL ± 0.005		 <p>RAILFX CABLE • SPECIALTY</p>
PROPRIETARY AND CONFIDENTIAL THE INFORMATION CONTAINED IN THIS DRAWING IS THE SOLE PROPERTY OF NATIONWIDE INDUSTRIES. ANY REPRODUCTION IN PART OR AS A WHOLE WITHOUT THE WRITTEN PERMISSION OF NATIONWIDE INDUSTRIES IS PROHIBITED.		
SIZE A	DWG. NO. RFXMARKETINGDRW	REV. -
SCALE: 1:32 WEIGHT:		SHEET 1 OF 2

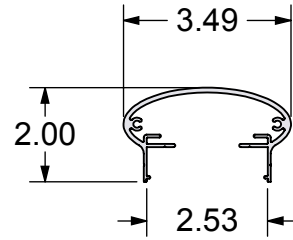
TOP RAIL OPTIONS AND DETAILS



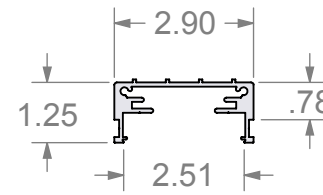
RFX100



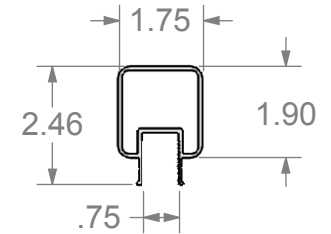
RFX200



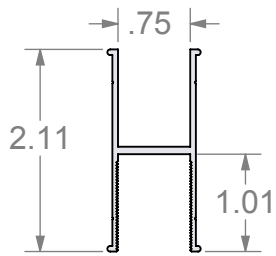
RFX300



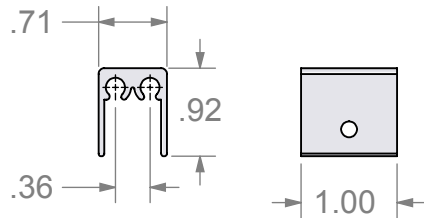
RFX400



RFX250

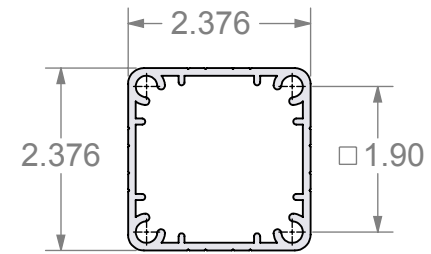


RFXBR
BOTTOM RAIL



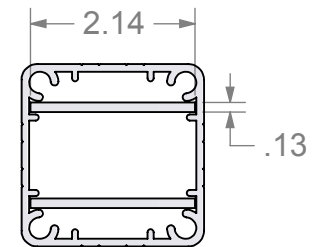
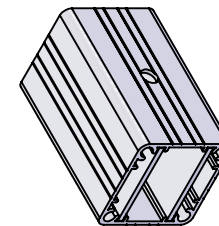
RFXRCB
RAIL CONNECTING BLOCK

**BOTTOM RAIL AND
RAIL CONNECTING
BLOCK
DETAILS**



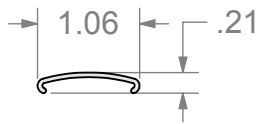
RFX238P
RFX STANDARD POST X-SEC

POST DETAILS

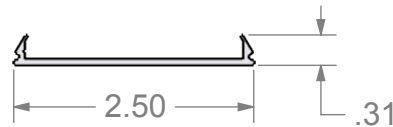


RFX238P WITH RFXPS (POST STIFFENER)
HOLES MUST BE IN LINE WITH STIFFENER

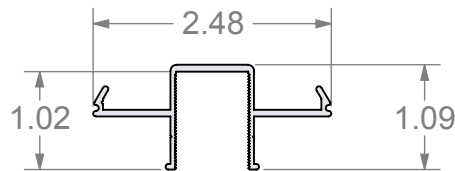
FILLER OPTIONS AND DETAILS



RFXPF
PICKET FILLER
USED WITH RFX100 /
RFX250 / RFXBR



RFX238FF
FLAT FILLER
USED WITH RFX200/RFX300/RFX400
FOR CABLE INFILL



RFXGPF
GLASS PICKET FILLER
USED WITH RFX200/RFX300/RFX400
FOR GLASS OR PICKET INFILL

DIMENSIONS ARE IN INCHES
TOLERANCES:
FRACTIONAL ±1/16"
ANGULAR: MACH ±1° BEND ±1°
TWO PLACE DECIMAL ±0.01
THREE PLACE DECIMAL ±0.005

PROPRIETARY AND CONFIDENTIAL
THE INFORMATION CONTAINED IN THIS
DRAWING IS THE SOLE PROPERTY OF
NATIONWIDE INDUSTRIES. ANY
REPRODUCTION IN PART OR AS A WHOLE
WITHOUT THE WRITTEN PERMISSION OF
NATIONWIDE INDUSTRIES IS PROHIBITED.



RAILFX
EXTRUSIONS
MARKETING DRW

<small>SIZE</small> A	<small>DWG. NO.</small> RFXMARKETINGDRW	<small>REV.</small> -	<small>SHEET 2 OF 2</small>
<small>SCALE: 1:32</small>	<small>WEIGHT:</small>		