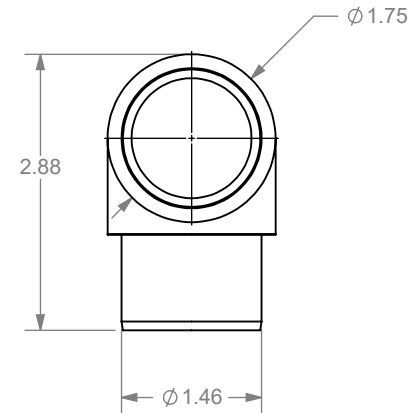
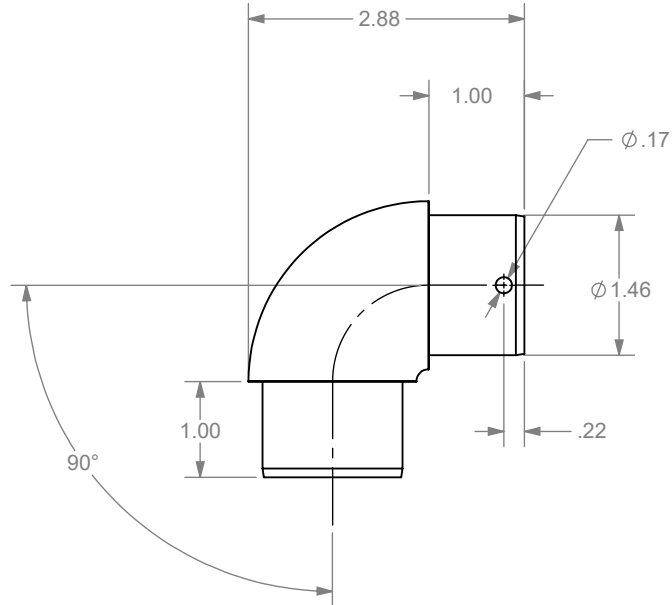
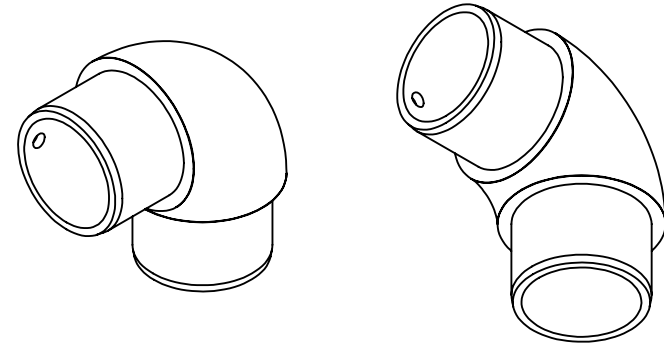


PART NUMBER	FINISH	SPECS
RFXADAHRMM90-MI	MILL	RAW
RFXADAHRMM90-BL	BLACK	AAMA 2604 POWDER COAT
RFXADAHRMM90-BZ	BRONZE	AAMA 2604 POWDER COAT
RFXADAHRMM90-WH	WHITE	AAMA 2604 POWDER COAT
RFXADAHRMM90-SI	SILVER	AAMA 2604 POWDER COAT
RFXADAHRMM90-AN	ANODIZED	215R 1 CLASS 1 CLEAR

ECR/DCR		REV.	REVISIONS	DESCRIPTION	DATE	APPD
-	-	-	INITIAL RELEASE		2-24-21	DHL-



RFXADAHRMM90
MATERIAL: A360 CAST ALUMINUM

DIMENSIONS ARE IN INCHES
TOLERANCES:
FRACTIONAL $\pm 1/16"$
ANGULAR: MACH $\pm 1"$ BEND $\pm 1"$
TWO PLACE DECIMAL ± 0.01
THREE PLACE DECIMAL ± 0.005

PROPRIETARY AND CONFIDENTIAL
THE INFORMATION CONTAINED IN THIS
DRAWING IS THE SOLE PROPERTY OF
NATIONWIDE INDUSTRIES. ANY
REPRODUCTION IN PART OR AS A WHOLE
WITHOUT THE WRITTEN PERMISSION OF
NATIONWIDE INDUSTRIES IS PROHIBITED.



SIZE A	DWG. NO. CS--RFXADAHRMM90	REV. -
SCALE: 1:2	WEIGHT:	SHEET 1 OF 1