



## EXPRESS MOUNT BRACKETS™

### CABLE RAILING MADE EASY.

It's now easier than ever to expand your view. Express Mount Brackets drastically reduce cable railing installation time by eliminating the need to drill holes through wood posts. The Express Mount Brackets are compatible with Classic and Low Profile cable kits and work for both level and stair railing applications.



LEARN MORE

### IT'S SIMPLE:



#### SIMPLE DIY CABLE INSTALLATION

Retrofits on new or existing wood posts, both level and stair applications



#### SAVES TIME - NO DRILLING THROUGH POSTS

Brackets install on the exterior face of the post, no drilling through posts required



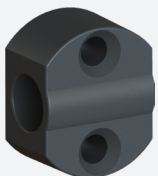
#### EXPANDED VIEWS

Cable provides open sightlines when compared to picket style railings and other cable railing systems

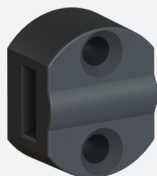


#### DURABLE & VIRTUALLY MAINTENANCE FREE

Patent pending design backed by a Limited Lifetime Warranty



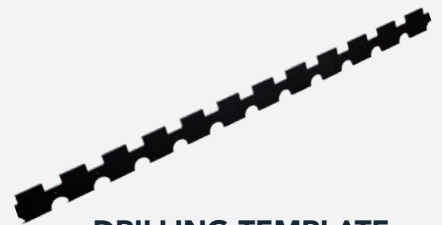
**END POST**  
RFXFMCEFKIT



**INTERMEDIATE POST**  
RFXFMCIFKIT

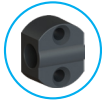


**CORNER POST**  
RFXFMCCFKIT



**DRILLING TEMPLATE**  
RFXFMCFITEMP

## PLAN YOUR PROJECT WITH EXPRESS MOUNT BRACKETS™



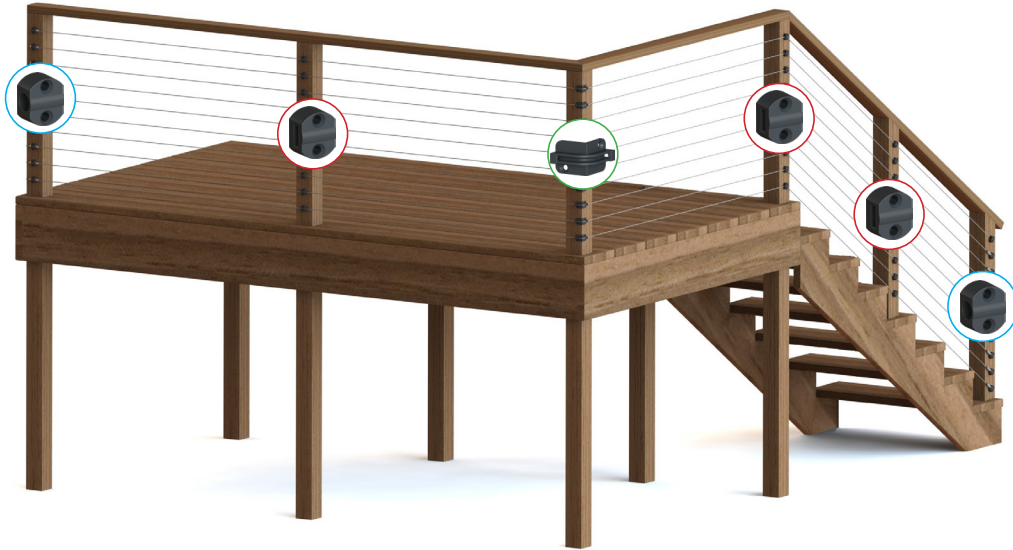
**END POST BRACKET**  
20 per package



**INTERMEDIATE POST BRACKET**  
10 per package



**CORNER POST BRACKET**  
10 per package



### EXAMPLE ORDER FOR ABOVE DECK

(36" Railing Height)

#### EXPRESS MOUNT BRACKETS™:

- (1) End Post Bracket
- (3) Intermediate Post Bracket
- (1) Corner Post Bracket
- (1) Universal Drilling Template

#### CABLE RAILING KITS:

(Choose one)

- (10) Classic Cable Railing Kit (5-70' lengths)
- (10) Low Profile Cable Railing Kit (5-70' lengths)

### SPECIFICATIONS

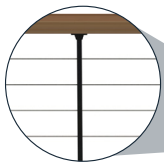
- Material: Wood
- Railing Height: Minimum 36"
- Post Spacing: 4'  
*For posts spaced more than 4' apart, a picket or cable brace is needed.*

### CALCULATE BRACKETS NEEDED

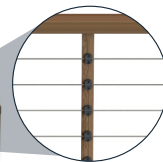
(Number of brackets needed is based on 3 1/8" cable spacing)

- 36" Railing Height: 10 brackets per post
- 42" Railing Height: 12 brackets per post

### RAILFX CABLE BRACE



### 2X2 WOOD PICKET



**POST SPACING:** Cables must be supported in some manner every 4'. If post spacing is greater than 4', we recommend installing a RailFX cable brace with pre-drilled holes or a 2x2 wood picket with Express Mount Intermediate Brackets (see illustration).

Note: If using a 2x2 wood picket and Express Mount Intermediate Brackets, you will need to use shorter screws than those provided.